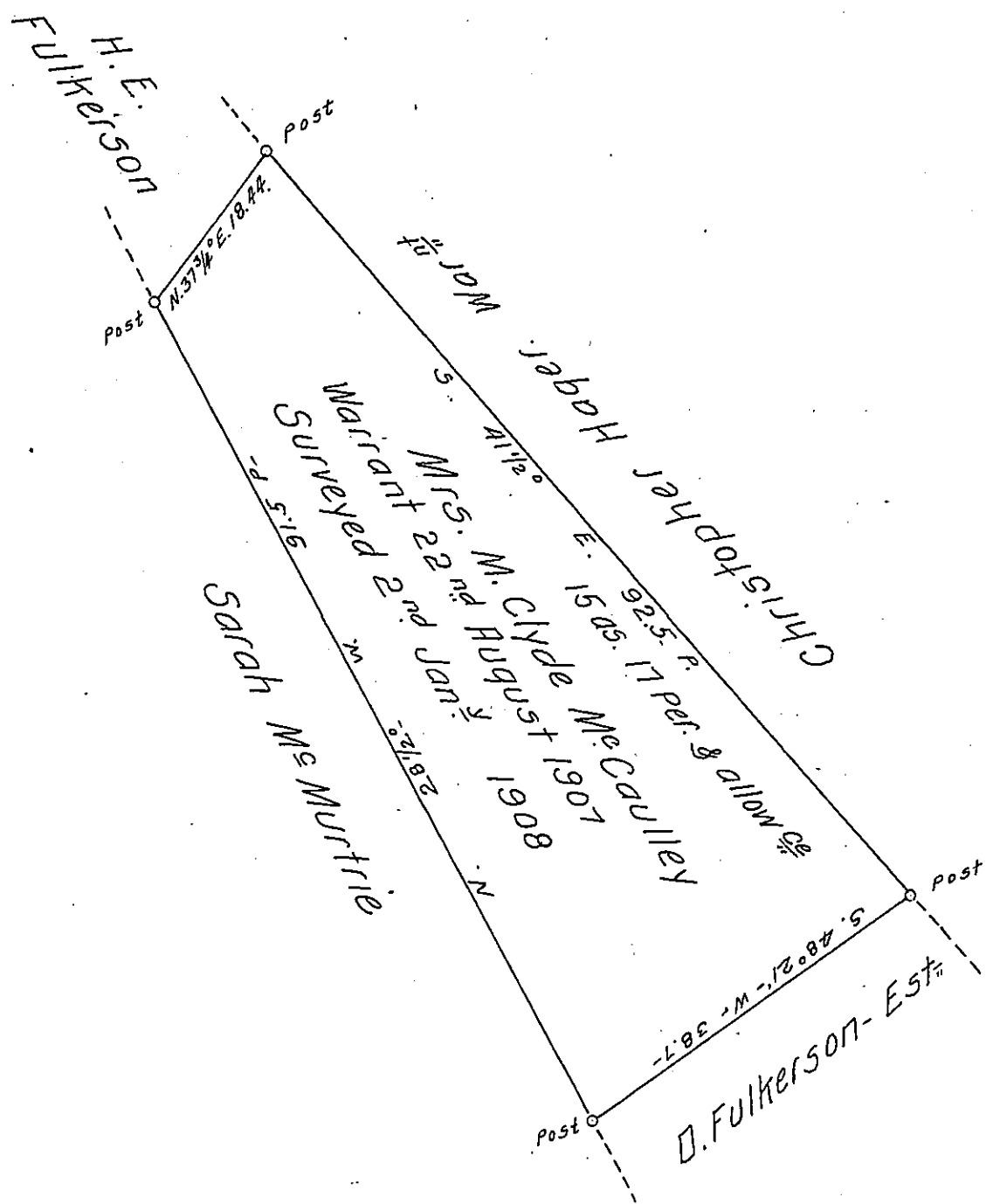


FORM NO. 1.



Somerset County

A Draft of a tract of land situated in the Township of Geulich and County of Clearfield, containing Fifteen acres, 17 perches and allowance of six per cent. for roads, etc. Surveyed the Second day of January, 1908, in pursuance of a warrant granted to Mrs. M. Clyde Mc Caulley, dated the twenty second day of August, 1907.

Henry Houck
~~To Hon. Isaac D. Brown~~
 Secretary of Internal Affairs.

Thomas W. Moore
 County Surveyor

IN TESTIMONY that the above is a copy of the original remaining on file in the Department of Internal Affairs of Pennsylvania, made conformably to an Act of Assembly approved the 16th day of February 1833, I have hereunto set my hand and caused the Seal of said Department to be affixed at Harrisburg, this twenty third day of January 1908.

Henry Houck
 Secretary of Internal Affairs.